



# WeSat®

Weather-at-Sea

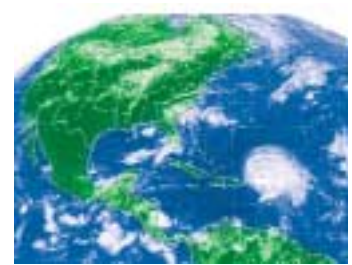
## The *affordable* system from Sea Tel® that captures TV and satellite weather images.

WeSat lets you:

- Pick the best, most weather-friendly routes, wherever you're sailing.
- Avoid weather surprises. See storms and hurricanes developing. Keep an eye on polar ice melting and breaking up.
- Get a feel for where the weather's going by "looping" images and seeing its progression in "motion."

### GEOSTATIONARY SATELLITE IMAGE SOFTWARE FEATURES

- Images received in full color
- Automatic image identification
- Animate and receive every frame in full color
- Animate multiple areas in full color
- Complete image stored in animation mode
- 3D display option
- Country borders on GOES and Meteosat images
- Dual reception windows showing current and last image



### Global Weather Satellite Services

Meteosat – Europe  
 GOES/EAST – Atlantic  
 GOES/WEST – Pacific  
 GMS – Far East  
 (additional receiver required)

### COMPUTER REQUIREMENTS

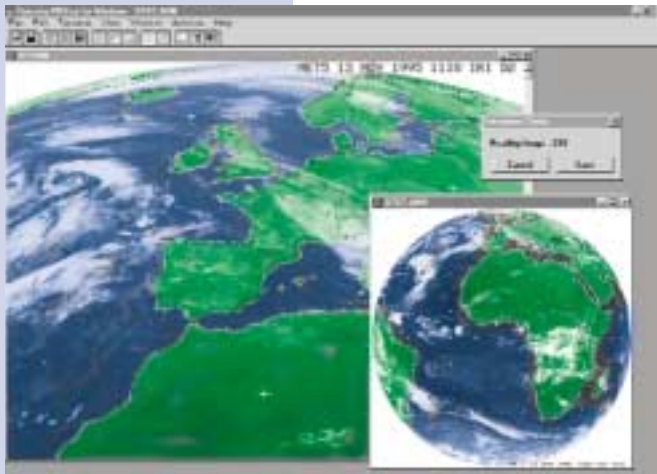
Dedicated computer

Sea Tel can provide an (optional) complete computer system fully integrated with Sea Tel's WeSat® and Sea Tel's RAM antenna control software. It is configured as follows:

CPU:	Pentium III 500 MHz
RAM:	64 MB PC100 SDRAM
Disk Drive:	8.4 GB
Video Card:	8 MB AGP
Com Ports required:	2 (available)
Accessories:	3.5 inch floppy, CD ROM drive
Display:	17 inch SVGA monitor
Operating System:	Windows 98

Your Computer: Alternately, you may use your existing computer system if it meets or exceeds the above specifications. One external Com Port and one internal Com Port must be available for use.

WeSat® and RAM Software are included with the system

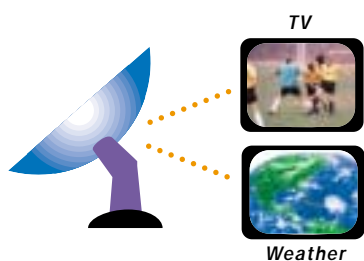


- ◀ **Show global and local views in one display – with animation!** Shown here: simultaneous Meteosat Europe and Whole World Animation.

# When you're not checking the weather, relax and watch satellite TV.

Get satellite TV and the weather with Sea Tel's® *Dual Weather-and-TV-at-Sea* systems.

SeaTel's 32-inch, 40-inch and 48-inch DBS/DTH Systems can use the same above decks antenna system and controller for both WeSat® and DBS/DTH services. Switch quickly between geostationary weather service and TV satellite locations. Use the antenna for TV programming and download weather images at night or whenever the TV service is not in use. Already have the stabilized antenna? Upgrade kits make adding the weather easy.

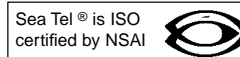


Antenna Dish Diameter:	32 inches/.8m	40 inches/1.0m	48 inches/1.2m
Radome Diameter:	40 inches/.9m	48 inches/1.2m	60 inches/1.5m
Radome Height:	49 inches/1.2m	57 inches/1.5m	66 inches/1.7m
Antenna Weight (w/radome):	120 lbs./55Kg	180 lbs./82Kg	210 lbs./95.5Kg
Type of Stabilization:	3-Axis Servo	3-Axis Servo	3-Axis Servo
Roll & Pitch Stabilization:	+/- 30 degrees	+/- 30 degrees	+/- 30 degrees

**Power Requirements (all models):** 90 watts @ 115 VAC. Power requirements do not include satellite receiver or your TV set. Power to the antenna is supplied by the antenna control unit (40 watts @ 24 VDC).

**Over 200 satellite channels\* bring news, sports and entertainment on board around the world.**

U.S. & Canadian Waters: Direct TV®, DISH Network™ Bell ExpressVu®, Europe & Middle East: Astra™, Eutelsat™ and Orbit™. Latin and South Americas: Galaxy Latin America (GLA™), SKY™. Others: Many new satellite TV service providers around the world.



\*Users should be aware that, unlike weather satellite services, satellite TV service providers charge fees for programming and receivers. Consult your service provider for prices.



Marine Electronics - Croatia  
 A. Mahnica 19  
 51500 Krk, Croatia  
 Tel:+385/51/855586  
 Fax:+385/51/855587  
 Web: <http://www.marine-electronics.hr>  
 E-mail: [sales@marine-electronics.hr](mailto:sales@marine-electronics.hr)